

Canon

Imaging across networks

iR5000/6000

DIGITAL SYSTEM
SOLUTIONS

New generation technology

•
Cost-effective solution

•
Central to your network

CREATED BY CANON FOR
SEAMLESS INTEGRATION
ACROSS YOUR NETWORK





1. Optional finisher for document collation, stapling and booklet making

2. Touch sensitive LCD screen display presents simple menu choices for all functions

3. Two 1500-sheet decks for A4 size paper (64-200 gsm) and two 550-sheet user adjustable paper drawers (A3-A5R, 64-80 gsm)

the solution

imageRUNNER is a completely new generation of digital products from Canon that will change the way you work forever. In fact, our innovative imageRUNNER solutions (iR for short) have the power to revolutionise the whole business of document processing in your organisation, saving you money every day.

HEART OF THE MATTER

iR5000 and iR6000 are versatile multi-function devices that put the solution to all your print and copy requirements right at the centre of your office network. Differentiated solely by their output speed (50 and 60 A4 pages per minute respectively), each of these compact digital machines takes document processing into a new dimension, combining comprehensive laser printing and copying functions with advanced finishing capabilities.

SEAMLESS INTEGRATION

Canon's expertise as IT specialists enables us to exploit the potential of network technology to the full, delivering the benefits of centralised document production to modern workgroups. Integrating seamlessly into your office network, the new imageRUNNERS eliminate the need for individual printers on different user's desks, saving space, reducing costs and enhancing productivity. In fact, they could change your whole approach to work, giving you more time to focus on the good things in life.

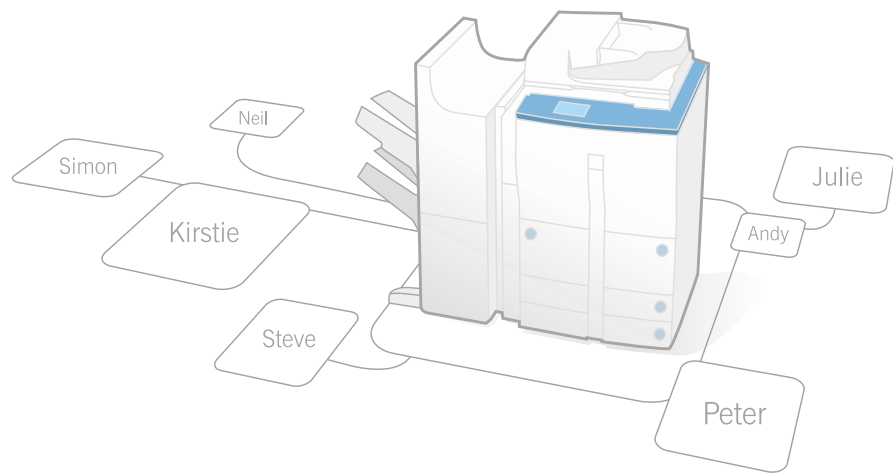
GREATER CAPABILITY

Print double-sided pages, group, collate and staple your documents exactly as you wish ... speed up your rate of output. iR technology puts the power of an advanced document processing solution on every user's desktop, with a common user interface to minimise the task of training. Most organisations will find it far more cost effective to use a fully-featured centralised network device than to maintain a separate office copier and individual desk top printers.



R E L A X

RELAX WITH SOLUTIONS
CREATED BY CANON
TO CHANGE THE WAY
YOU WORK



multi-tasking

The iR5000/6000 system combines the highest quality digital reprographic hardware with fully integrated printer driver software and a unique RUI-based network management utility package. All copy, print and finishing functions are controlled by single chip (CPCA) technology, which facilitates true multi-tasking.

NetSpot management software

Automatic document feeder

Document Merging

Touch screen display

YOUR PERSONAL SERVER

Having a single controller for copy and print functions allows text and graphics from different sources to be merged with ease. For example, you could send a job for printing and insert an image which has been scanned in to a mailbox. Or complete a copying job with additional pages sent via the printer function - ideal when you want to reproduce more originals than the machine's automatic document feeder will hold.

Documents can also be merged from different software applications: an Excel™ spreadsheet, for example, inserted into a document which has been created using Word™.

REMOTE USER INTERFACE

Canon's unique RUI (Remote User Interface) management software for the iR5000/6000 is a web based utility accessible via standard Web Browsers. This provides versatile facilities for the remote management and monitoring of the system. The RUI minimises costs by being simple to install, setup, use and maintain.



NETWORK

NETSPOT

NetSpot is a remote management application. This intuitive software enables central administration for a variety of Canon devices, including the iR5000/6000. Providing versatile facilities for the remote management and monitoring of the system, only one NetSpot installation is required for the whole Network. This utility can be used to support other Canon devices too.

1. The iR5000/6000 comes with a 100 sheet DADF as standard



2. Optional 3,500 (A4, 64-200gsm) sheet paper deck gives ample capacity for lengthy printing runs

productive

Designed to handle the most demanding document processing requirements, the iR5000/6000 achieves the highest levels of productivity without impeding network traffic. Instead of processing single pages individually, it uses 'RIP-while print' technology to process whole documents at the same time as others are printing.

QUANTITY & QUALITY

A3 to A6R
2400 (equiv) x 600dpi
Resolution Enhancement
Scan Once, Print Many
Password-control

iR 5000/6000 will handle a range of paper sizes from A3 to A6R, with maximum on-board paper capacity of 7650 sheets. Reproductive quality is superb. High resolution prints are produced at 2400 (equivalent) x 600 dots per inch. A useful Image Quality mode function allows you to fine-tune the appearance of copied images, while Special Resolution Enhancement Technology ensures that even the most complex images are crisp and clear.

CREATIVE VERSATILITY

Use of 'Scan Once, Print Many' technology for copying allows images to be edited in all sorts of different ways. You can separate images and enlarge them; combine up to 16 reduced size images on a single A4 sheet; rotate or shift images on a page; make two separate copies from the facing pages of a book; erase spine shadows and frame lines and change positive images into negative ones (and vice versa). Even the most complex images are easy to execute using the machine's touch screen display.

MAXIMUM SECURITY

A password-controlled Department ID Management feature helps control copier usage, providing a record of exactly how many copies individual work groups have produced. To ensure that sensitive documents remain confidential, print jobs can be stored in memory space which has been specially assigned to individual users, ready for printing out at an appropriate time.



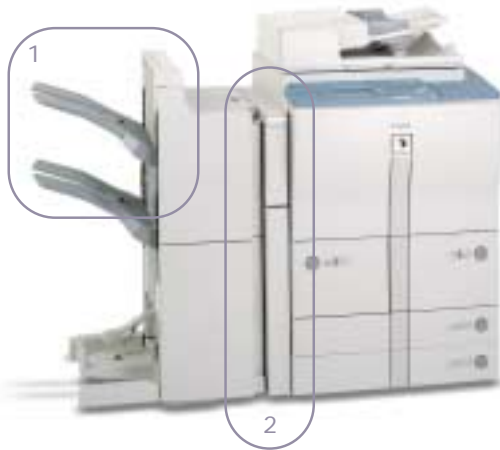
P E R F O R M A N C E

THE CANON IR SERIES,
CREATED TO ACHIEVE
THE HIGHEST QUALITY AT
THE HIGHEST SPEED



1. Advanced Finisher. One of the optional finishers available. Provides full document production facilities including document collation and stapling, booklet creation

2. Optional puncher unit (A4, A4R, A3, 11" x 17", 64-200gsm) available in 2 or 4 hole configuration



finishing

The finishing options available are the ultimate labour-saver, **grouping**, **collating**, **folding** and **stapling** your documents exactly as you want. There is even an optional **hole punch** function which outputs documents ready for filing. All these functions can be controlled remotely from network users' desktops, using easy to operate printer driver software.

BOOKLET CREATION

- Group Runouts
- Collate Documents
- Hole Punch Inserts
- Staple and fold booklets

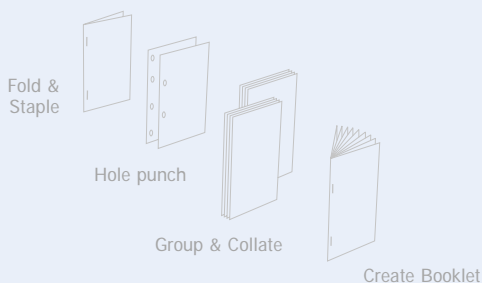
Single or double-sided originals can be copied in such a way that they can easily be made into booklets. The iR5000/6000 will automatically work out the pagination for you, so that images are output in the correct order ready for folding and saddle stitching by the advanced finisher.

LAST-MINUTE PROOFING

You can program the iR5000/6000 to output a sample document set before embarking on a multiple copying and/or finishing run. This gives you the opportunity to make last-minute amendments as required.

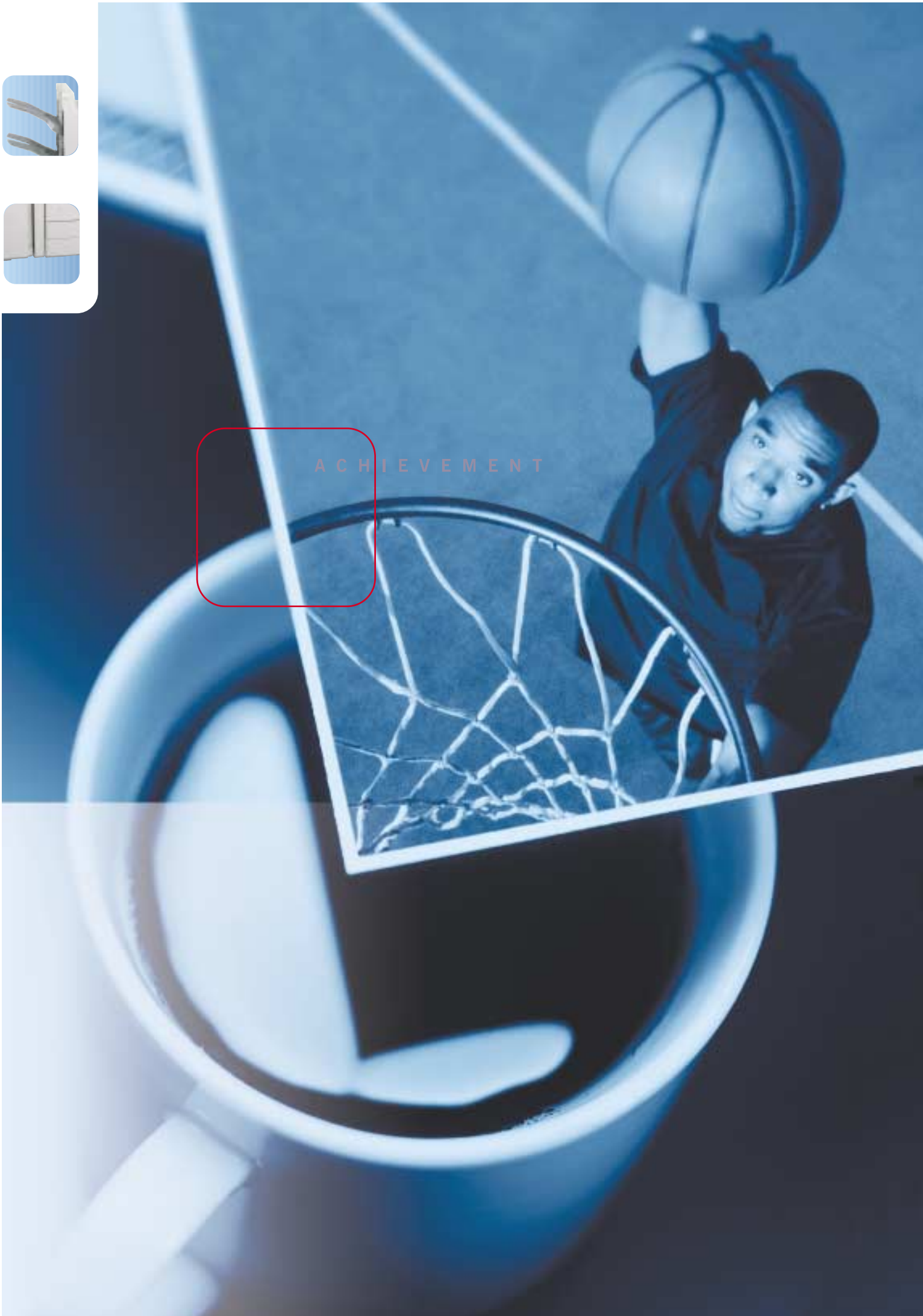
ELECTRONIC SORTING

Use of 'Scan Once, Print Many' technology allows complete documents to be produced and collated by the iR5000/6000 automatically. Finished document sets are output one at a time, offset from each other for easy retrieval from the machine.





A C H I E V E M E N T





confidence

People the world over put their trust in Canon's reputation for high quality products and superlative customer service, coupled with a strong commitment to [technological innovation](#). All this, plus our deep understanding of today's network environment, underpins the success of our total solutions for document processing.

Dedicated technicians

Superlative service

High Quality

ISO 9000

SUPERLATIVE SERVICE

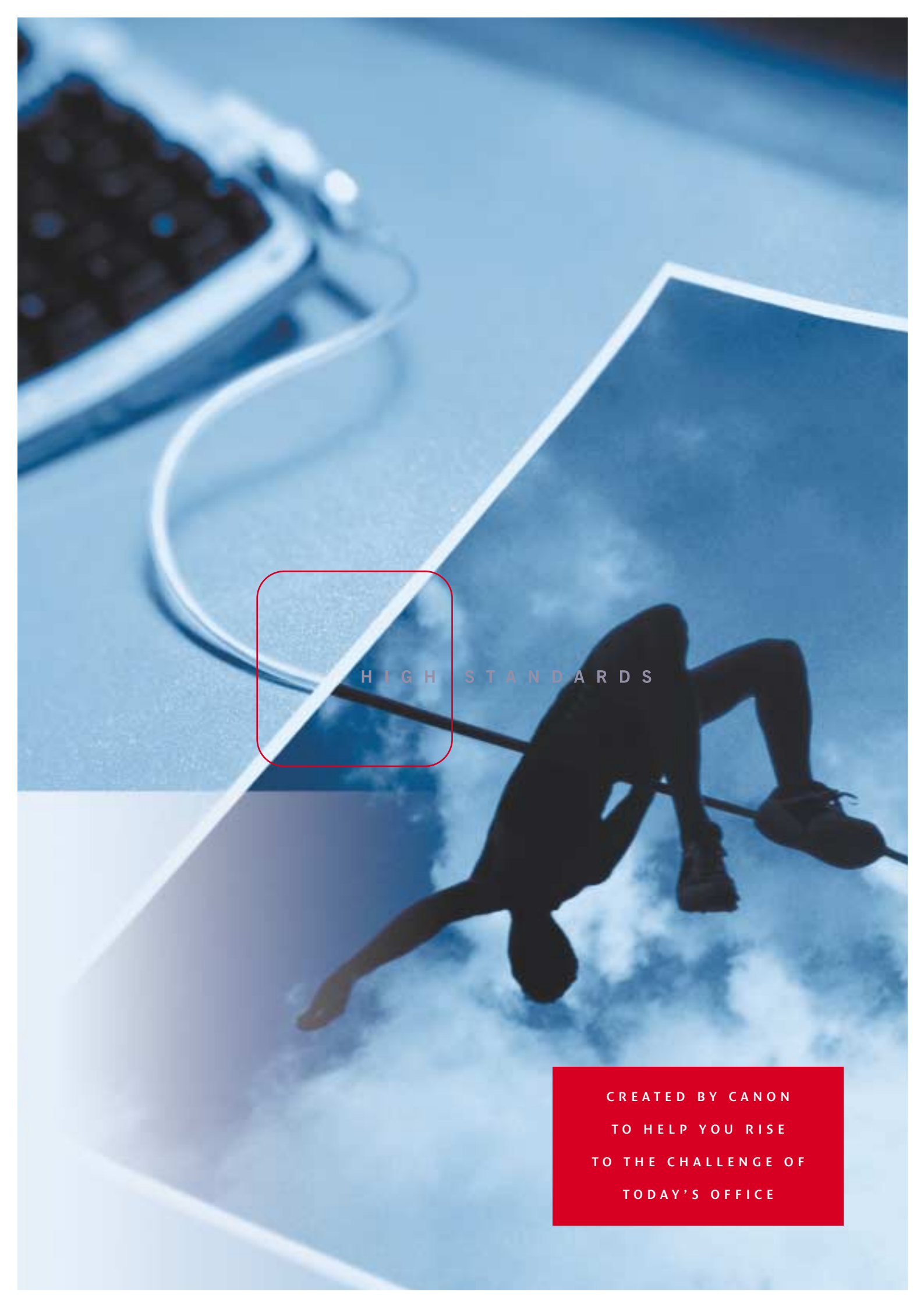
At Canon, we are committed to providing the highest standards of after-sales service to complement the quality of our products.

Technical support is provided in accordance with the ISO 9000 standard, delivered by a team of dedicated service technicians based throughout the UK.

KYOSEI

Canon's business philosophy is called 'kyosei', which means 'living and working together for the common good'. The spirit of kyosei underlies every aspect of our Customer Satisfaction programme, which aims to achieve continuous improvements in the quality of our products and the service that customers receive.

[You can therefore select the iR5000/6000 with total confidence. Trust Canon to offer you the best in everything.](#)



H I G H S T A N D A R D S

CREATED BY CANON
TO HELP YOU RISE
TO THE CHALLENGE OF
TODAY'S OFFICE



Document Handling

A4 Print Speed	iR5000 – 50ppm iR6000 – 60ppm
A3 Print Speed	iR5000 – 30ppm iR6000 – 30ppm
Standard Paper Supply	4,150 sheets
Maximum Paper Supply	7,650 sheets
Cassettes	Standard: Cassettes 1&2 (1,500 sheets each) A4, 64-200gsm, Cassette 3 (550 sheets) A5R-A3, 64-80gsm, Cassette 4 (550 sheets) A5R-A3 Fixed, 64-80gsm
Bypass	50 sheets, A3-A6R, 64-200gsm
Output Paper Size/Weight	A3-A6R, 64-200gsm
Image Memory	5.1GB for Scan Once Print Many, Reserved Jobs, Electronic Collation, Scan to Mailbox
Double siding	A5R-A3, 64-200gsm, Continuous Stackless Duplex
Print Monitor	Job Complete Notification, Print Monitor, Print Log
Document Finishing	Sort / Group / Staple-Sort / Off-Set Electronic Sorting, Sample Set, Booklet Finishing, 4/2-Hole Punch, Cover/Sheet Insertion
Warm Up Time	iR5000 – 5 minutes max iR6000 – 6 minutes max
First Page	iR5000 – 3.8 seconds max
Out Time[#]	iR6000 – 3.8 seconds max

Image Handling

Image Manipulation	Multi-up, Zoom (25-400%), Rotation, Mirror Imaging, Negative/Positive, Frame Erase, Image Repeat
Image Quality	2400 (equiv.) x 600 dpi Resolution (equiv. = with Image Enhancement)
Margin/Image Shift	Yes

Network Management

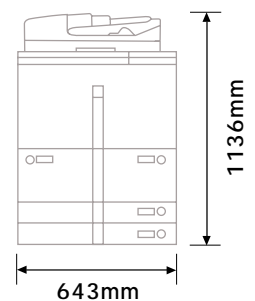
Network Topology	Ethernet
Network Protocols	TCP/IP, Novell IPX 802.2 & 802.3, AppleTalk, Canon LPR Utility for Windows 95/98 workgroups
Operating Systems	Novell Netware 3.x/4.x/5.x, Windows 95/98/2000, Windows NT, Apple Macintosh* and several UNIX systems
Drivers	Windows 95/98/2000, Windows NT, Apple Macintosh 7.6.1 or higher*
Connecting Ports	10/100BaseT, Parallel
Network Management Software	NetSpot Version 3.2.2, Remote User Interface (RUI)

Printer Specific Features

Mailboxes	100 available
PDL's	PCL5e, PCL6, PostScript 3* emulation
Memory Size	Std = 128MB
Processor	MIPS CW4011

Copier Specific Features

Scan Once Print Many	
Copy Select	1 to 999
Mixed Original	Yes
Copying	
Job Build	Yes
Job Memories	9
Job Recall	Last 3 Jobs
ID Codes	1,000 7 digit passwords
Dimensions	W643 x D743 x H1136mm (includes DADF)



Options

Printer Board	(IR5000PRINT)
3.5K Paper Deck	(IR5000PDECK)
Off-Set	(FINISHERF1)
Finisher	
Saddle Finisher	(FINISHERF2)
2 Hole Punch Unit	(IR5000PUNCH2H)
4 Hole Punch Unit*	(IR5000PUNCH4H)
Shift Tray	(IR SHIFT TRAY)
Document Tray	(DOCUTRAYC1)
Control Card	(CONTROLCARIV)
System	

Canon

Imaging across networks



Canon (UK) Ltd, Woodhatch,
Reigate, Surrey, RH2 8BF
Tel: 0800 0353535

[#] Standard configuration, original on platen glass

* PostScript upgrade and 4-hole punch option will be available from November 2000