

you can  
**Canon**

 **PIXMA**  
FOR PROFESSIONALS

Enhancing your professional  
imaging workflow with PIXMA Pro





# Contents



Designed for Professionals

**page 4|5**



A Choice of Ink Systems

**page 6|7**



The Perfect Black and White

**page 8|9**



Streamlining Your Printing Workflow

**page 10**



Professional Colour Control

**page 11**



Professional Printing Direct from Your Digital SLR

**page 12**



Versatile Media Handling

**page 13**



Canon Fine Art and Speciality Papers

**page 14|15**



Specifications

**page 16**



# Introducing PIXMA Pro

Introducing PIXMA Pro: Canon's new range of A3+ inkjet photo printers for the professional market. Drawing on Canon's unique heritage in professional photography, the PIXMA Pro9500\* and PIXMA Pro9000 bring all the benefits of the commercial print studio into your workspace. Experience increased productivity, greater efficiency and – most importantly - complete creative control.

This magazine provides a small indication of just how much Canon's PIXMA Pro printers can enhance your professional imaging workflow. To learn more about how the PIXMA Pro9500 and the PIXMA Pro9000 can extend your printing capability, visit <http://www.canon-europe.com/pixmapro>.

\*Available 2007

## Key features

- Professional-quality monochrome and colour printing up to A3+ / 14" x 17"
- Choice of 8-colour dye-ink or 10-colour pigment-ink printing system
- Flat paper path for heavyweight media
- Adobe Photoshop® plug-in software
- Stylish, robust design for professionals
- Single Ink system with Smart LED's
- Extensive camera direct printing features
- Up to 4800dpi, FINE print head
- Range of Canon specialist media



# Designed for Professionals

PIXMA Pro printers are engineered to provide the reliable performance that professional studios depend upon. Here is a selection of the features that can be found on both the PIXMA Pro9000 and Pro9500.

## Flat Paper Path

The front paper tray can be positioned to provide a flat paper path for media up to 14" x 17" in size and 1.2mm in thickness.



## Auto Sheet Feeder

PIXMA Pro printers are equipped to handle everyday tasks as well as challenging print jobs. The Auto Sheet Feeder accommodates up to 150 sheets of plain or photo paper for printing proofs or documents.



## Steel chassis

Made with 1.6mm thick reinforced steel, the 8-section chassis ensures stable operation



## Spindle Bushes and Metal output rollers

High quality spindle bushes are designed to resist the wear and tear of heavy use. Solid metal output rollers protect prints as they pass through the printer.



## Single Ink System

Individually replaceable ink tanks help to minimise waste. A warning LED flashes when levels are low, making it easy to identify and replace depleted tanks.





### EOS Styling

PIXMA Pro printers have been designed to blend seamlessly into the professional photography environment.



Contours and textures complement the look of Canon's EOS professional camera series. Blue LED's on the PIXMA Pro9500 are a further acknowledgment of the EOS heritage.



### Dual Carriage Rails

Constructed of thick metal, dual carriage rails ensure precise movement of the print head for reliable, accurate printing.



### FINE print head

Canon's high-performance FINE print head produces crisp A3+ prints to a maximum resolution of 4800 x 2400dpi. A nozzle count of 7,680 (PIXMA Pro9500) and 6,144 (PIXMA Pro9000) enables high quality full-colour printing with each pass of the print head. The print head's auto-self alignment mechanism checks the alignment on every colour for complete accuracy.



### Integrated wheels

Built-in wheels make it easy to reposition the printer for large format printing.



### CD Tray

The detachable CD tray lets you print directly onto inkjet-printable CDs or DVDs. It can be stored on the underside of the printer when not in use.

# A Choice of Ink Systems

The PIXMA Pro range offers photographers a choice between two high quality ink systems. Each delivers a number of distinct advantages, depending on your professional requirements.



## PIXMA Pro 9500

### 10 INKS FOR GALLERY QUALITY MONOCHROME AND COLOUR PRINTING

#### Pigment inks for long-lasting commercial print output

The PIXMA Pro9500 uses Canon's new Lucia inks – a set of professional level pigment inks that can also be found in Canon's commercial large format printer, the imagePROGRAF iPF5000. These high density pigment inks offer exceptional print quality on both photographic and fine art papers, and on finishes ranging from matte to semi-gloss. They deliver image permanence of up to 100 years with colour prints and 200 years with monochrome output.

#### 10 Colours

Three monochrome inks and seven colour inks provide photographers with outstanding monochrome and colour reproduction in a single unit. The addition of red and green inks extends the colour gamut for true-to-life portraits, landscapes and fine art prints. The dedicated gray ink reduces metamerism and ensures that prints are free of the colour shift that can appear with conventional CMYK-generated output.



PIXMA Pro9500: 10-Color Pigment Inks



#### Typical applications

Pigment ink prints are valued in the commercial print market for their ability to maintain high contrast levels, colour saturation and image clarity over extended periods of time.

The PIXMA Pro9500 is ideally suited to photographers and fine artists seeking to create marketable prints for:

- Studio portraits
- Model portfolios
- Online photography sales
- Gallery exhibits
- Fine art work

# PIXMA Pro 9000



8 DYE-BASED INKS FOR OUTSTANDING COLOUR REPRODUCTION ON ALL MEDIA SURFACES

## 8-colour dye-based ink system for rich, vibrant colours

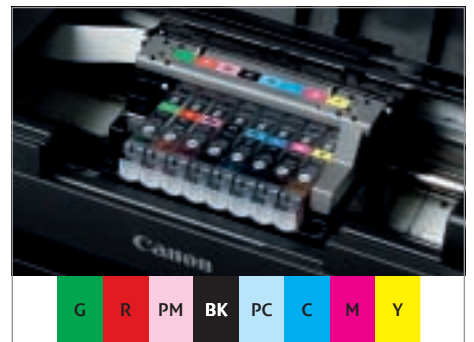
The PIXMA Pro9000's dye-based inks produce bright, highly saturated colours on a wide range of media, from matte paper to high gloss. Light reflects evenly off the printed surface, giving professionals an exceptionally wide colour gamut to work with and allowing prints to retain a life-like sense of depth.

Eight separate ink channels offer a level of colour fidelity rivalling that of positive photo film. The red and green inks increase red region and green region saturation by 60% and 30% respectively compared to 6-ink printers. Subtle details – particularly in areas of low chromaticity – are reproduced with proof-standard accuracy.

## ChromaLife100

ChromaLife100 is Canon's unique system for achieving beautiful prints with enhanced longevity. The three components of the system – Canon genuine inks, Canon specialised photo papers and Canon FINE print head technology – work in concert to deliver speed, quality and extended lightfastness. With ChromaLife100, output from the PIXMA Pro9000 can resist fading for up to 100 years\*.

\*Based on accelerated testing, assuming image is stored in an album at 23°C / 50% R.H. and printed using genuine Canon inks onto Photo Paper Pro.



PIXMA Pro9000: 8-Color dye-based Inks



## Typical applications

The PIXMA Pro9000 delivers high quality output at impressive speeds, making it ideal for professionals who demand reliable and fast colour reproduction in their daily work.

### Photographers

- Instant post-shoot samples for clients
- Quick portfolio prints

### Creative Agencies

- Fast proofing of high-colour artwork
- Point-of-sale and indoor display materials
- High-impact concept designs

# The Perfect Black and White

With dedicated monochrome printing capabilities and powerful software, PIXMA Pro provides photographers with the tools they need for professional black and white photos.



## Neutral Tones

Stabilised gray balance with consistent neutral tones.

## High Contrast

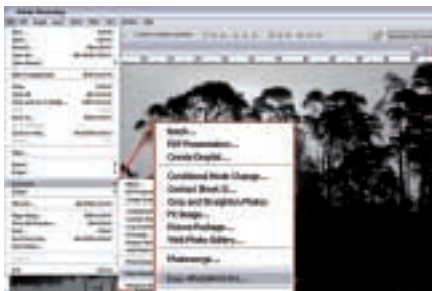
Deep, rich blacks on both fine art and photo paper.

## Smooth Gradations

Minimal grain with smooth tonal transitions.

## Monochrome Printing with Easy-PhotoPrint Pro.

The Easy-PhotoPrint Pro plug-in for Adobe PhotoShop and Digital Photo Professional makes it easy to achieve exceptional black and white prints, whatever your level of experience.



1. Launch Easy-PhotoPrint Pro through Adobe Photoshop or Digital Photo Professional.



2. If appropriate, select the Grayscale Photo checkbox to convert the image to grayscale. With this option selected, the printer will automatically minimise the use of colour inks.



3. Use the sliders to adjust brightness and increase contrast to your liking. Boosting contrast adds impact to monochrome prints – bringing intensity to portraits and enhancing the dramatic effect of landscapes.



4. Click the Pattern Print button to print an A4 sheet with thumbnail versions of the image displaying the effects of varying brightness and contrast levels. Choose the setting that best meets your requirements.

Achieving Optimum Results with Monochrome Printing	
Image	Use Grayscale Photo Mode?
Grayscale-converted colour image	Yes
Original monochrome image	Yes
Monochrome image with Cool Tone/Warm Tone or custom colour adjustments	No

## Add Tones to Monochrome

Warm up or cool down your black and white prints with a range of monochrome output options, selectable from the printer driver or Easy-PhotoPrint Pro.



**Cool Tone:** Add a subtle blue colour cast to enhance the mood of a scene.



**Warm Tone:** Warm up monochrome shots with a slight orange cast.



**Custom:** Apply a custom colour balance with manual adjustment of cyan, magenta and yellow values. Use the Pattern Print feature to evaluate different results.

## The Benefits of Three Monochrome Inks

With dedicated Photo Black, Matte Black and Gray inks, the PIXMA Pro9500 produces exceptional black and white prints.

GY

**Gray:** A dedicated gray ink minimises problems such as metamerism, so that gray tones appear exactly as intended under any light source. It allows photographers to reproduce a wider range of neutral and grayscale tones.

MBK

**Matte Black:** High density Matte Black ink adds higher contrast and saturation for printing on fine art papers and canvas, which can normally cause blacks to lose their intensity. The PIXMA Pro9500 automatically uses Matte Black ink when a fine art paper is selected in the printer driver or Easy-PhotoPrint Pro.

PBK

**Photo Black:** Photo Black ink is designed to maintain high contrast on smooth, semi-gloss photo paper.

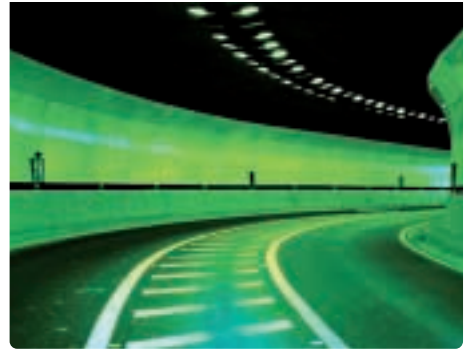


## 10 Inks on One Print Head

The PIXMA Pro9500's monochrome inks are conveniently located in the print head. This avoids the need for swapping tanks and purging ink when switching between colour and monochrome printing.

# Streamlining Your Printing Workflow

PIXMA Pro printers come with professionally-oriented software to enhance your creativity and productivity. It includes Easy-PhotoPrint Pro, a powerful plug-in for Adobe Photoshop CS/CS2 and Digital Photo Professional that will help you get the most from your printer.



**1** Batch transfer up to 400 images from Adobe Photoshop or 1000 from DPP. Apply print settings to multiple images with a few simple clicks.



**2** Select layout options and media settings from the user-friendly interface. Settings can be saved for quick recall on future jobs.



**3** Use the Colour Adjustment screen to adjust colour balance, brightness and contrast. Image conversion to Black & White or using colour profiles can also be selected from this screen.



**4** Fine-tune colour balance and eliminate wasteful test runs with Pattern Print. Different colour balance settings are simulated on a single sheet of printed paper to help you make the right choice.

## ICC Profiles

ICC (International Colour Consortium) profiles describe how digital imaging devices capture or display colour. They ensure that the original colours of an image are accurately reproduced by other devices, taking into account different media types or display methods.

### Using ICC Profiles with PIXMA Pro

PIXMA Pro printers feature a dedicated ICC input profile for the Adobe RGB colour space, along with output profiles for printing on Canon specialist papers. These profiles are automatically installed on your computer as part of the driver installation process.

*Adobe PhotoShop:* Select an ICC profile and rendering intent from the Colour Management section of the Print With Preview window.

*Easy-PhotoPrint Pro:* Select Enable ICC mode in the Colour Management screen of Easy-PhotoPrint Pro. Select an ICC profile and rendering intent from the drop-down lists that appear. Any custom ICC profiles that have been correctly installed on your operating system can be used in the same way.

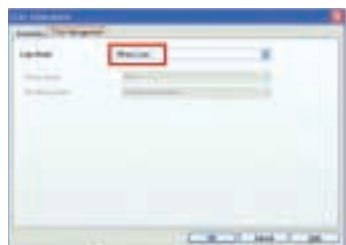
### Canon ICC Profiles

Pro9000	PR	1
Printer model	Canon	Print quality setting
	paper type:	(1 = highest quality)
	<b>PR</b> = PR-101	
	<b>SP</b> = PP-101	
	<b>SG</b> = SG-201	
	<b>MP</b> = MP-101	

Canon ICC profiles are created for specific printers, paper types and print quality settings. All Canon profiles use a standard naming system.

# Professional Colour Control

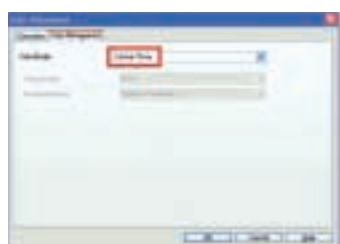
For photographers who depend on print for revenue, consistent colour accuracy is vital. A colour controlled workflow provides the assurance that what you see on your calibrated monitor is exactly what appears in the printed output. Easy-PhotoPrint Pro gives you a choice of three different colour management modes, optimised to match the needs of specific workflow environments.



## Workflow 1: PHOTO COLOUR

### *Print JPEGs without adjustment*

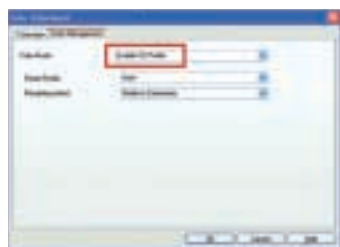
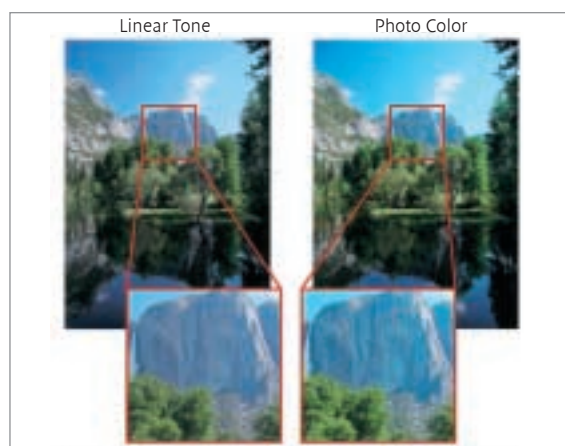
Canon's Photo Colour setting is the default mode for all PIXMA printer drivers, and automatically optimises your images to produce pleasing colours without the need for adjustments. Contrast and colour are enhanced without sacrificing the subtleties of the image. This mode is suitable for photographers who want to minimise post-production work.



## Workflow 2: LINEAR TONE

### *Retouch images before printing*

Select Linear Tone mode if you prefer to perform your own image re-touching in Adobe Photoshop or Digital Photo Professional prior to printing. The printer driver responds to the image's hue and brightness settings as linearly as possible, faithfully reproducing any contrast or colour adjustments you have made.



## Workflow 3: ICC PROFILES

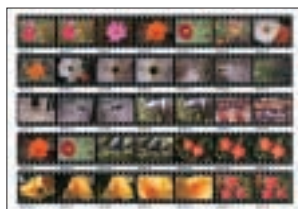
### *ICC profiles for industry-standard colour control*

With Enable ICC Profiles mode selected, colour accuracy is managed using predefined colour profiles for input and output devices. It gives you a standardised method for colour control when printing digital images.



# Professional Printing Direct from Your Digital SLR

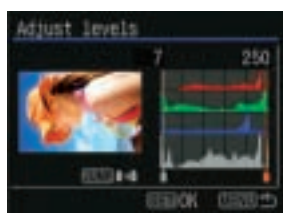
Many modern digital cameras can be connected directly to printers using the cable supplied in the box. Pictures can be printed directly from the camera - PC free.



## PRINTING WITH PICTBRIDGE

PictBridge direct printing features are available with any PictBridge-compliant camera. Typical functions\* include the ability to crop images, print multiple copies, select print size, and create index prints. Simply prepare your image on the camera and then transfer to your printer via the direct cable connection.

\*PictBridge features can vary depending on the make and model of camera connected. See camera specifications for further details.



## CANON TO CANON DIRECT PRINTING

When connected directly to an EOS Digital SLR, PIXMA Pro allows you to achieve results previously only possible with PC-based software.

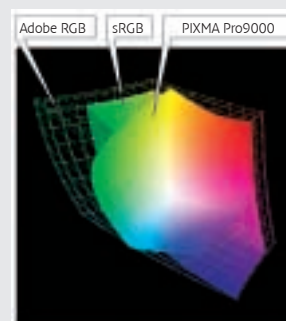
Perform in-camera adjustments, altering picture variables such as colour tone, colour balance, saturation and contrast with ease. Apply sophisticated picture effects, including correct balance for Black & White printing and Sepia toning, to achieve superior results quickly and efficiently.

## PICTURE STYLES

A feature of new EOS models, Picture Style presets simplify the control of image processing parameters. Just like different film types, each Picture Style offers a different colour response to suit specific shooting requirements. PIXMA Pro printers provide full support for Picture Styles. This means that images are faithfully printed according to camera settings, allowing you to maintain complete control from input to output.



Picture Style



## Printing Adobe RGB Images

The extended colour gamut of PIXMA Pro printers allows EOS photographers to faithfully reproduce images captured in the Adobe RGB colour space. Adobe RGB offers a broader colour palette than conventional sRGB, particularly for colours in the cyan to green and orange regions. An Adobe RGB ICC profile is supplied with the PIXMA Pro printer drivers to enable simple, accurate import of images, so prints contain colours that more accurately match those in the original scene.

# Versatile Media Handling

In the competitive professional photography market, versatility is key. PIXMA Pro's flexible design gives you the freedom to choose the output format that exactly fits your needs.

## Flat paper path

The front paper tray and extendable rear support provide a flat paper path for printing onto heavyweight media such as fine art papers, canvas and board. With the ability to handle media of up to 356mm/14" in width and 1.2mm in thickness, you can create gallery-quality prints of your work without leaving the studio.



## Auto Sheet Feeder

The Auto Sheet feeder accommodates standard weight fine art and photographic papers, as well as standard document paper. Its 150-sheet capacity allows for automatic printing of multi-page invoices or documents, allowing you to concentrate on the tasks that matter.



## Professional CD printing

The CD/DVD printing function is a simple yet effective tool for professionalizing your work. A printed DVD or CD adds a smart finish to your deliverables. Add your name or company logo for cost-effective promotion, or apply index prints to make it easier for yourself and clients to archive images.

# Canon Fine Art and Speciality Papers

Texture, size and paper quality play a key role in determining a print's commercial value. With new fine art papers and premium photo paper sizes, Canon is providing photographers with the materials needed to maximise the potential of their work.

## FINE ART PAPERS

Fine art papers provide a rich and elegant finish that will add value to your work. Substantive and finely textured, they are ideal for framing and display work and are equally suited to fine art and photographic printing.



### FA-PR1

#### Fine Art Photo Rag

**A4, A3, A3+ (13" x 19"), 188 g/m<sup>2</sup>**

Fine Art Photo Rag is made by Hahnemühle and ideally suited to PIXMA Pro, Photo Rag is a bright cotton-based media that provides exceptional print quality with a soft, velvet texture. Ideal for all types of fine art and photographic printing, Photo Rag is particularly suitable for high quality monochrome prints.



### FA-PM1

#### Fine Art Premium Matte

**A4, A3, A3+ (13" x 19"), 210 g/m<sup>2</sup>**

This thick, heavyweight (210g/m<sup>2</sup>) paper produces professional quality prints with a smooth, matte finish. Premium Matte is suitable for a variety of applications, including photographs and computer-generated artwork.



### FA-ME1

#### Fine Art Museum Etching

**A4, A3, A3+ (13" x 19"), 350 g/m<sup>2</sup>**

A natural white, 100% cotton rag paper supplied by Hahnemühle, with the texture of traditional art paper. Ideal for discerning digital artists, galleries and museums.

## Hahnemühle FineArt media

The Hahnemühle paper mill in Dassel, Germany has been producing quality mould-made artists' papers since 1584. Leaders in the field of fine art media, Hahnemühle papers are valued by artists the world over for their uniquely rich appearance and texture.

Hahnemühle has now applied its 420 years of expertise to the digital imaging world. Fine Art Paper PhotoRag and Fine Art Paper Museum Etching have high-quality, textured surfaces ideal for Canon's PIXMA Pro range, and work equally well with both pigment and dye-based inks. All Hahnemühle papers are acid free and lignin free, and are produced in accordance with ISO9706, DIN6738 and ANSI Z93.48-1984 standards for archive paper.



*Jörg Adomat, Managing Director  
Hahnemühle FineArt*

For more information, visit [www.hahnemuehle.com](http://www.hahnemuehle.com)

 **Hahnemühle**   
FINEART



## PROFESSIONAL PHOTO PAPERS

Canon premium photo papers ensure optimum image quality and longevity. Produce marketable photo prints in a range of finishes and a wide variety of commercial sizes, including 8" x 10", 10" x 12" and gallery-format 14" x 17".



### PR-101

#### Photo Paper Pro

4" x 6", A4, A3, A3+ (13" x 19"),  
8" x 10", 10" x 12", 14" x 17",  
245 g/m<sup>2</sup>

Canon's premium gloss paper for professional photographic output is now available in a range of dedicated photo sizes for the PIXMA Pro9000. Used as part of the ChromaLife system, Photo Paper Pro offers unrivalled colour reproduction, print speed and longevity.



### SG-201

#### Photo Paper Plus Semi-Gloss

4" x 6", A4, A3, A3+ (13" x 19"),  
8" x 10", 10" x 12", 14" x 17",  
260 g/m<sup>2</sup>

Satin finish paper with the texture of real photographic paper. This high quality, resin-coated paper produces brilliant photographs with reduced glossiness for a softer finish. 2 larger sizes are available for gallery and exhibition prints: A3+ (13" x 19") and 36x43mm (14x17").



### PP-101

#### Photo Paper Plus Glossy

4" x 6", 5" x 7", A4, A3, 270 g/m<sup>2</sup>

Canon's standard high-quality heavyweight photo paper offers superior quality output with a glossy finish.



### MP-101

#### Matte Photo Paper

A4, A3, 170 g/m<sup>2</sup>

Produces high quality photographs, graphics and text with a matte finish. Ideal for commercial photographic prints and computer-generated artwork.



# Specifications



	<b>PIXMA Pro9500 (Available 2007)</b>	<b>PIXMA Pro9000</b>
<b>Resolution</b>	Up to 4800 x 2400dpi <sup>1</sup>	Up to 4800 x 2400dpi <sup>1</sup>
<b>Print Engine</b>	10-ink FINE print head with 3 pl Micro-Nozzles	8-ink FINE print head with 2 pl Micro-Nozzles
<b>Colour Management</b>	ICM, ColorSync, Exif Print	ICM, ColorSync, Exif Print
<b>Photo Lab Quality Print Speed</b>	Borderless 4" x 6": Approx. 75 seconds* (Std) Bordered A3+ (13" x 19"): Approx. 239 seconds (Std)	Borderless 4" x 6": Approx. 30 seconds* (Std) Bordered A3+ (13" x 19"): Approx. 83 seconds (Std)
<b>Mono Print Speed</b>	Up to 9ppm (Max.), 2.3ppm (Std)	Up to 16ppm (Max.), 4.7ppm (Std)
<b>Colour Print Speed</b>	Up to 8ppm (Max.), 2.1ppm (Std) Bordered A4 page: Approx. 126 seconds (Std)	Up to 15ppm (Max.), 4.4ppm (Std) Bordered A4 page: Approx. 51 seconds (Std)
<b>Media Type</b>	Photo Paper Plus Glossy (PP-101), Photo Paper Plus Semi-Gloss (SG-201), Fine Art PhotoRag™ (FA-PR1), Fine Art Premium Matte (FA-PM1), Fine Art Museum Etching FA-ME1, Photo Stickers (PS-101), Matte Photo Paper (MP-101), Super White Paper (SW-201), Plain Paper	Photo Paper Pro (PR-101), Photo Paper Plus Glossy (PP-101), Photo Paper Plus Semi-Gloss (SG-201), Fine Art PhotoRag™ (FA-PR1), Fine Art Premium Matte (FA-PM1), Fine Art Museum Etching FA-ME1, Photo Stickers (PS-101), Matte Photo Paper (MP-101), Super White Paper (SW-201), High Resolution Paper (HR-101N), T-shirt Transfers (TR-301), Transparencies (CF-102), Plain Paper, Envelopes
<b>Media Weight</b>	Sheet feeder: 64 to 105 g/m <sup>2</sup> and supported Canon special media up to 270 g/m <sup>2</sup> Front feeder up to 1.2mm	Sheet feeder: 64 to 105 g/m <sup>2</sup> and supported Canon special media up to 270 g/m <sup>2</sup> Front feeder up to 1.2mm
<b>Media Input</b>	Sheet feeder: 150 sheets, Front: 1 sheet, CD-R / DVD tray: 1 printable CD-R or DVD	Sheet feeder: 150 sheets, Front: 1 sheet, CD-R / DVD tray: 1 printable CD-R or DVD
<b>DVD/CD Printing</b>	Available as standard	Available as standard
<b>Media Size</b>	Sheet feeder: A3+ (13" x 19"), A3, LDR+, LDR, A4, B4, B5, A5, Letter, Legal, 10" x 12", 8" x 10", 5" x 7", 4" x 6" Front feeder: A3+ (13" x 19"), A3, LDR+, LDR, A4, B4, B5, A5, Letter, Legal, 14" x 17", 10" x 12", 8" x 10", 5" x 7", 4" x 6"	Sheet feeder: A3+ (13" x 19"), A3, LDR+, LDR, A4, B4, B5, A5, Letter, Legal, 10" x 12", 8" x 10", 5" x 7", 4" x 6" Front feeder: A3+ (13" x 19"), A3, LDR+, LDR, A4, B4, B5, A5, Letter, Legal, 14" x 17", 10" x 12", 8" x 10", 5" x 7", 4" x 6"
<b>Borderless Printing</b>	Available using Photo Paper Plus Glossy (A3+ (13" x 19"), A3, A4, 5" x 7" & 4" x 6"), Photo Paper Plus Semi Gloss (A3+ (13" x 19"), A3, A4, 4" x 6"), Matte Photo Paper (A3, A4)	Available using Photo Paper Pro (A3+ (13" x 19"), A3, A4, 4" x 6", 14" x 17", 10" x 12" & 8" x 10"), Photo Paper Plus Glossy (A3+ (13" x 19"), A3, A4, 5" x 7" & 4" x 6"), Photo Paper Plus Semi Gloss (A3+ (13" x 19"), A3, A4, 4" x 6", 14" x 17", 10" x 12" & 8" x 10"), Glossy Photo Paper (A3+ (13" x 19"), A3, A4, 4" x 6"), Matte Photo Paper (A3, A4)
<b>Two Sided Printing</b>	Available by manual operation only using Super White Paper or plain paper in A3+ (13" x 19"), A3, A4, B5, A5, Letter & 5" x 7" sizes (Windows only)	Available by manual operation only using Super White Paper or plain paper in A3+ (13" x 19"), A3, A4, B5, A5, Letter & 5" x 7" sizes (Windows only)
<b>Ink Cartridge Configuration</b>	Single Ink technology - 10 separate ink tanks (PGI-9MBK, PGI-9PBK, PGI-9C, PGI-9M, PGI-9Y, PGI-9PC, PGI-9PM, PGI-9R, PGI-9G, PGI-9GY)	Single Ink technology - 8 separate ink tanks (CLI-8BK, CLI-8C, CLI-8M, CLI-8Y, CLI-8PC, CLI-8PM, CLI-8R, CLI-8G)
<b>Black Ink Tank Life</b>	PGI-9BK: 150 pages at 5% coverage <sup>2</sup> PGI-9BK: 630 pages (Printing ISO/JIS-SCID N5) <sup>3</sup>	CLI-8K: 200 pages at 5% coverage <sup>2</sup> CLI-8K: 1550 pages (Printing ISO/JIS-SCID N5) <sup>3</sup>
<b>Colour Ink Tank(s) Life</b>	150 pages at 5% coverage per ink tank <sup>2</sup> Cyan: 1150 pages, Magenta: 1600 pages, Yellow: 930 pages, Photo Magenta: 530 pages, Photo Cyan: 1150 pages, Red: 1600 pages, Green: 1600 pages (Printing ISO/JIS-SCID N5)	200 pages at 5% coverage per ink tank <sup>2</sup> Cyan: 580 pages, Magenta: 410 pages, Yellow: 380 pages (Printing ISO/JIS-SCID N5) <sup>3</sup>
<b>PC Interface &amp; Connectivity</b>	USB 2.0 Hi-Speed <sup>4</sup>	USB 2.0 Hi-Speed <sup>4</sup>
<b>Camera Interface &amp; Connectivity</b>	Direct Print Port: Camera direct photo printing from PictBridge compliant digital cameras & camcorders	Direct Print Port: Camera direct photo printing from PictBridge compliant digital cameras & camcorders
<b>Card Direct Printing</b>	—	—
<b>Image Viewer</b>	—	—
<b>Operating System Requirements</b>	Windows: PC with Windows XP, Windows 2000, Windows Me or Windows 98, USB interface <sup>5</sup> , CD-ROM Drive. Free hard disk space: 300 MB for Windows XP/2000 and Windows Me/98. Mac: Macintosh computer with Mac OS X v10.2.8 or later, USB interface. Free hard disk space: 350 MB for Mac OS X v10.2.8 or later.	Windows: PC with Windows XP, Windows 2000, Windows Me or Windows 98, USB interface <sup>5</sup> , CD-ROM Drive. Free hard disk space: 300 MB for Windows XP/2000 and Windows Me/98. Mac: Macintosh computer with Mac OS X v10.2.8 or later, USB interface. Free hard disk space: 350 MB for Mac OS X v10.2.8 or later.
<b>Driver Features</b>	Windows: Photo Optimizer PRO, Image Optimizer, Photo Noise Reduction, Vivid Photo Mac: Vivid Photo, Photo Noise Reduction	Windows: Photo Optimizer PRO, Image Optimizer, Photo Noise Reduction, Vivid Photo Mac: Vivid Photo, Photo Noise Reduction
<b>Software Included</b>	Windows: Easy-PhotoPrint Pro, Easy-WebPrint, Easy-PhotoPrint, PhotoRecord, Easy-PrintToolBox and CD-LabelPrint. Mac: Easy-PhotoPrint Pro, Easy-PhotoPrint and CD-LabelPrint	Windows: Easy-PhotoPrint Pro, Easy-WebPrint, Easy-PhotoPrint, PhotoRecord, Easy-PrintToolBox and CD-LabelPrint. Mac: Easy-PhotoPrint Pro, Easy-PhotoPrint and CD-LabelPrint
<b>Power Source</b>	AC 100 - 240V	AC 100 - 240V
<b>Power Consumption</b>	Approx. 1.8W (standby), approx. 20W (printing)	Approx. 1.8W (standby), approx. 20W (printing)
<b>Operating Temperature Range</b>	5° - 35°C	5° - 35°C
<b>Operating Humidity</b>	10 - 90% RH (no condensation)	10 - 90% RH (no condensation)
<b>Acoustic Noise Levels</b>	Approx. 34dB (A) (best quality mode)	Approx. 39dB (A) (best quality mode)
<b>Dimensions (W x D x H)</b>	660 x 354 x 191mm	660 x 354 x 191mm
<b>Weight</b>	Approx. 14.8 kg	Approx. 14.0 kg

<sup>1</sup> Ink droplets can be placed with a minimum pitch of 1/4800 inch.

<sup>2</sup> Print volume figures may vary with the content of the document and the print mode. Black calculation based on an average of four printers run continuously until ink out printing 1500 characters per page, normal text, in default mode on plain paper using Windows XP and Word 2003.

<sup>3</sup> Print volume figures may vary with the content of the document and the print mode. Colour calculation based on an average of four printers run continuously until ink out printing the ISO/JIS-SCID N5 pattern in default mode on plain paper using Windows XP and Photoshop 7.0.

<sup>4</sup> USB operation can only be guaranteed on a PC with pre-installed Windows XP, Windows 2000, Windows Me, or Windows 98. USB 2.0 Hi-Speed performance requires Windows XP Service Pack 1, Windows 2000 Service Pack 4 or Mac OS X version 10.2.8 or later with pre-installed USB 2.0 port.

<sup>5</sup> 4" x 6" borderless photo speed based on Standard mode driver setting using Canon Photo Paper Plus Semi-gloss paper

<sup>6</sup> 4" x 6" borderless photo speed based on Standard mode driver setting using Canon Photo Paper Pro paper

Print speed may vary depending on system configuration, interface, software, document complexity, print mode, page coverage, type of paper used and does not take into account data processing time on host computer. For more information on ChromaLife100 please visit [www.canon-europe.com/ChromaLife100](http://www.canon-europe.com/ChromaLife100)

**Canon Europa N.V.**  
P.O. Box 2262, 1180 EG Amstelveen,  
The Netherlands  
[www.canon-europe.com](http://www.canon-europe.com)

**Canon Inc.**  
30-2, Shimomaruko 3-Chome, Ohta-ku,  
Tokyo 146-8501, Japan  
[www.canon.com](http://www.canon.com)

English-UK Edition 0065W369  
© Canon Europa N.V., 2006 (1006)

**Canon (UK) Ltd**  
Woodhatch  
Reigate  
Surrey  
RH2 8BF

Tel: 08705 143723  
Fax: 01737 220022  
[www.canon.co.uk](http://www.canon.co.uk)

**Canon Ireland**  
Arena Road  
Sandyford Industrial Estate  
Dublin 18  
Ireland

Tel: 01 2052400  
Fax: 01 2958141  
[www.canon.ie](http://www.canon.ie)



you can  
**Canon**

Specification CEL 1.1.10042006  
Some images are simulated for clarity of reproduction. All data is based on Canon's standard testing methods. Specifications are subject to change without notice. (TM) and ©: All company and/or product names are trademarks and/or registered trademarks of their respective manufacturers in their markets and/or countries